

2012 BELL 407GX

SN: 54335 REG: N401TD






Sellacopter™



2012 Bell 407GX

SN: 54335
REG: N401TD

(512).877.8993
lan.s@sellacopter.com
www.sellacopter.com

AIRFRAME

Airframe Total Time: 9,061.0 Hours
USA Based and N Registered
No Known Damage History
Corporate Charter / Tours

ENGINE

250-C47B
Total Time Since New: 4,529.7 Hours
Cycles Since New: 4,826
Serial No: CAE-847147

MAINTENANCE

Complete Records Since New
Part 135 Maintained
Last 12 Month Inspection: Dec 2024
Current Operator: Helicopter Flight Services / Heli NY

EXTERIOR

Gloss Black
Silver Accent Stripes
High Skid Gear w/ Emergency Floats
High Visibility Doors

INTERIOR

Black Leather
Four Point Harness (Cockpit)
Corporate Seats and Soundproofing
Air Conditioning and Heater

WEIGHTS

Max Take Off Weight: 5,250 Lbs.
Useful Load: 2,061 Lbs.

Specifications and times are subject to verification. Aircraft offered is subject to prior sale, lease, and / or withdrawal from the market.



2012 Bell 407GX

SN: 54335
REG: N401TD

(512).877.8993
lan.s@sellacopter.com
www.sellacopter.com

AVIONICS / INSTRUMENTS

Garmin GDU 1040H PFD/MFD
GDC 74H Air Data
GRS 77H ADAHRS Unit
2x GIA 63H VHF Comm
GMA 350H Audio Panel
GTX 33H Transponder
GDL 88 ADS-B In/Out
Radar Altimeter
XM Satellite Radio Kit
406Mhz ELT

ADDITIONAL EQUIPMENT

Engine Inlet Barrier Filter System
Cabin Heat
Cabin Air Conditioning
Tail Rotor Camera
Quiet Mode
28Ah Battery
Corporate Interior w/ Soundproofing
Corporate Armrests
Corporate Leather Seats
Automatic Door Opener Kits (Baggage & Passenger)
Aux Tank Provisions
FloatSteps w/ Float Landing Gear*
Emergency Float Kit*
Jettisonable Door (LH + RH Crew)
Wire Strike Protection System
Rotor Brake
Dual Controls

Specifications and times are subject to verification. Aircraft offered is subject to prior sale, lease, and / or withdrawal from the market.









TAKE OFF AND LANDING
HEAD REST MUST BE IN
UP POSITION

DANGER
TAIL ROTOR

Sellacopter™



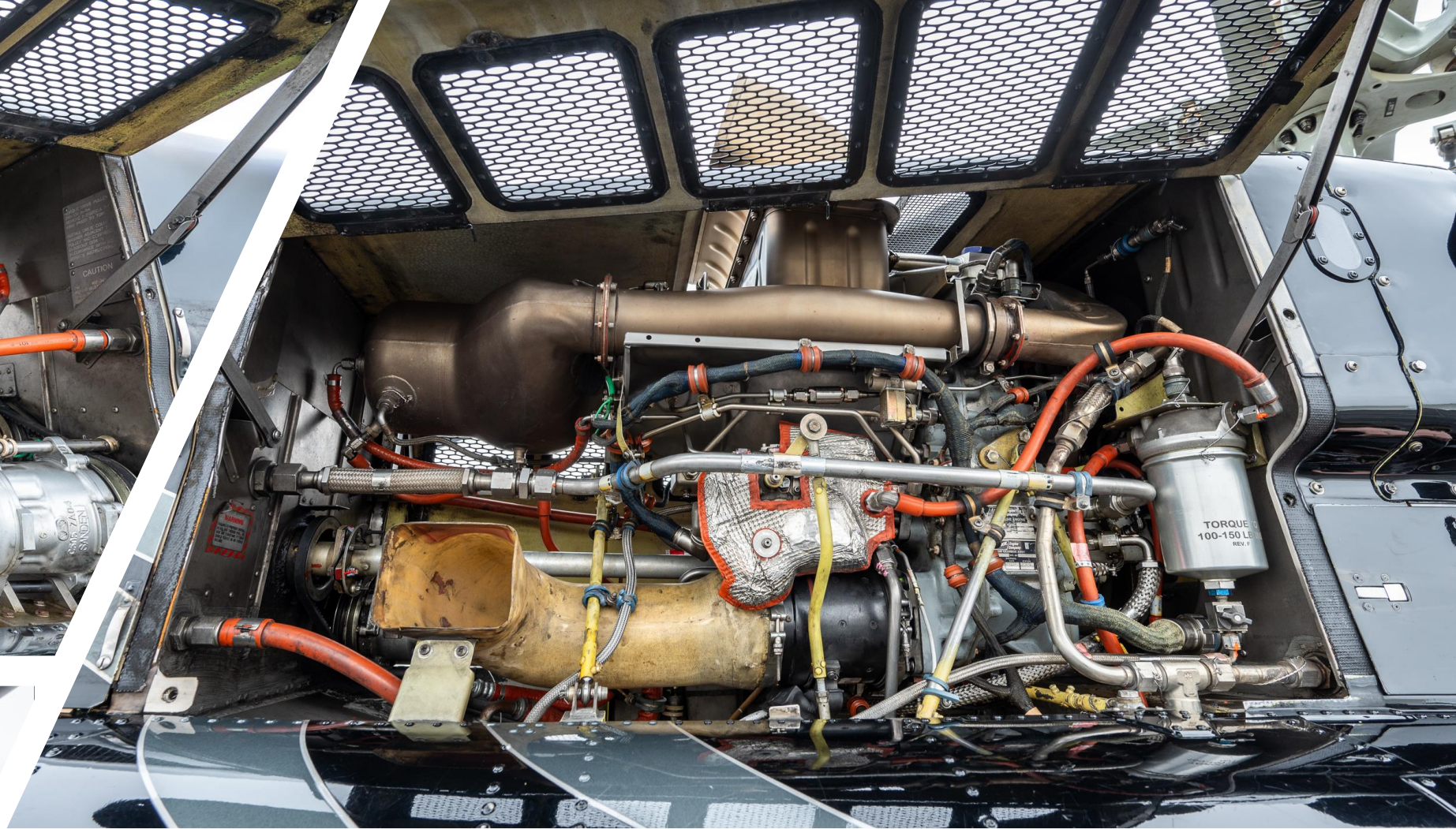
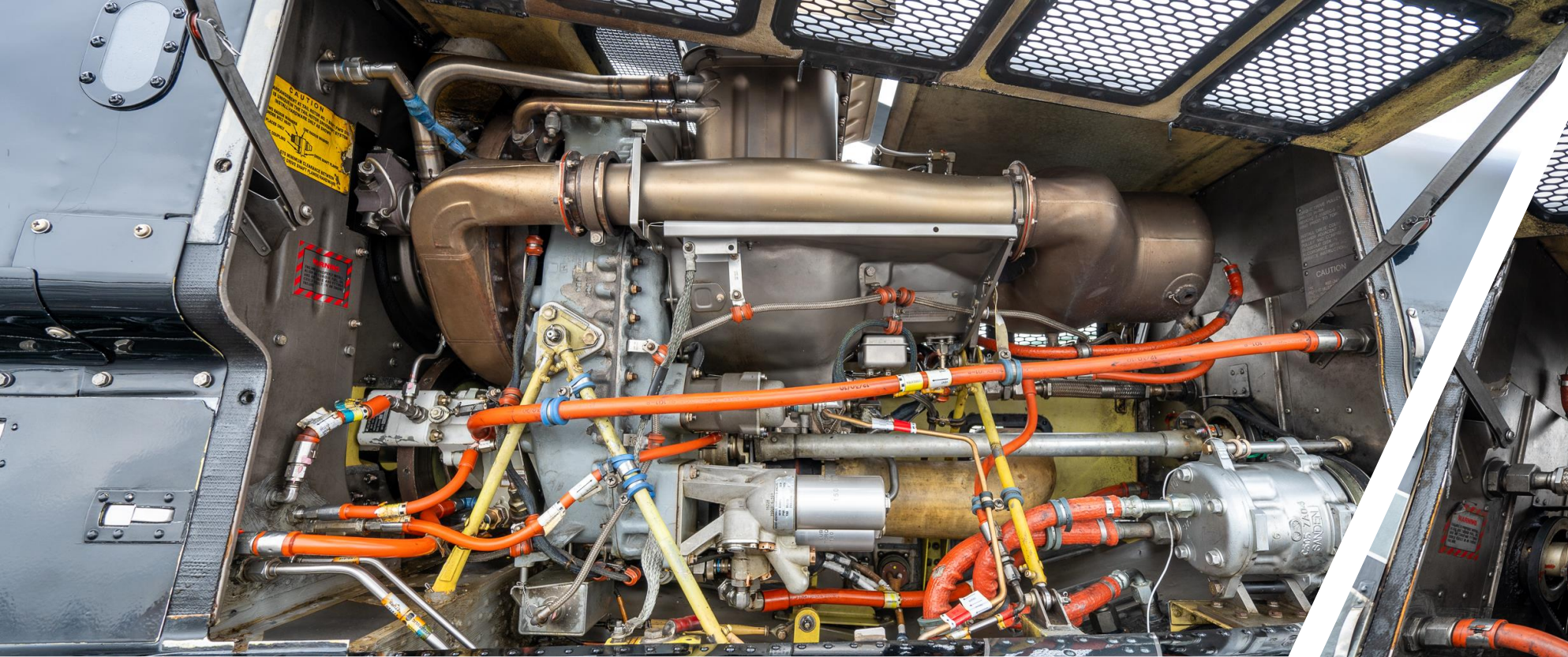


183 LITERS
ALLONS = 559 LITERS
FUELS

heliny.com



CAUTION:
INLET EXHAUST INTAKE COVERS, ROTOR
DOWN AND BELL FIRST AID KIT MAY BE
IN EXTENSION AREA WITH SNAP COV
INSTALLED. REDUCE MAXIMUM ALLOW
BAGGAGE COMPARTMENT WEIGHT 5 PC
EIT LOCATED BEHIND SPACE



Sellacopter™



HeliNY.com

DA

Bell 407 GX

Sellacopter™



 **Sellacopter™**





 **Sellacopter™**



1-855-SELLACOPTER (735-5226)

Sales@sellacopter.com

Sellacopter.com

